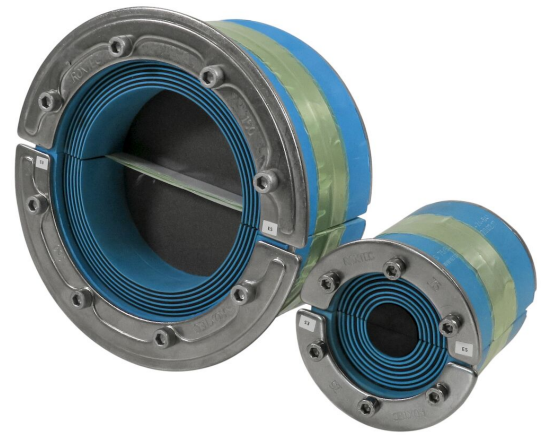




Sello Roxtec RS EMC

Sello de entrada para EMC, para un solo cable o tubería.

El Roxtec RS EMC es un sello con garantía de compatibilidad electromagnética diseñado para un solo cable o una tubería en collarines metálicos. El sello de entrada se compone de dos mitades con capas retirables, con lo que se puede adaptar a cables y tuberías de diferentes tamaños. Se puede elegir entre los módulos Roxtec ES para apantallamiento electromagnético y, por otro lado, los módulos PE que protegen frente a las perturbaciones conducidas. El diseño del sello facilita la instalación en torno a cables o tuberías existentes. Utilice la varilla de test de continuidad eléctrica Roxtec para comprobar el rendimiento eléctrico de instalaciones de paso de cables Roxtec BG™ o ES.



- Resistente a roedores
- Rápido y sencillo de instalar

Características del producto



Calificación contra incendios



Estanco al agua



Estanco a gases



Protección contra EMI

Estructura de instalación



Metal

Tipo de montaje



Manguito existente

Calificaciones y certificados

Fuego

- CLASE A de acuerdo al estándar FTP IMO 2010
- Clasificación E/EI según EN 13501
- Clasificación F/T según UL 1479
- CLASE H según el Código IMO 2010 FTP + curva de carga de fuego HC
- Ráfagas de fuego según ISO 22899-1 y OTI 95634

Estanquidad

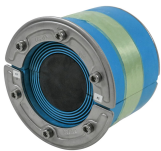
- Gas: 2,67 bar (catastrófico)
- Agua: 4 bar (catastrófico)

Soportes

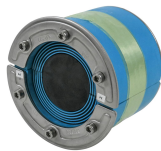
- Apantallamiento electromagnético
- Ecuilibración de potencia

Datos de los componentes de sellado

Componentes de sellado



Sello RS ES



Sello RS PE



Lubricante Roxtec

Accesorios



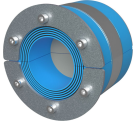
Accesorios ES y BG

Para obtener información detallada, visite [roxtec.com](https://www.roxtec.com).

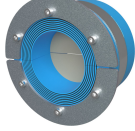


Kits de sellos preconfigurados

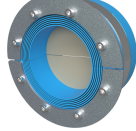
mm/kg



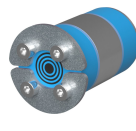
RS 100 ES AISI316 WOC



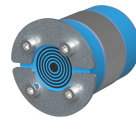
RS 125 ES AISI316 WOC



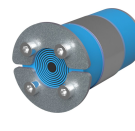
RS 150 ES AISI316 WOC



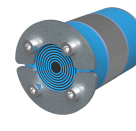
RS 25 ES AISI316



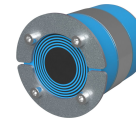
RS 31 ES AISI316



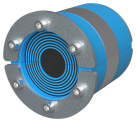
RS 43 ES AISI316



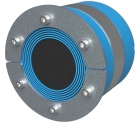
RS 50 ES AISI316



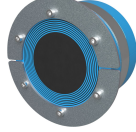
RS 68 ES AISI316



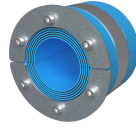
RS 75 ES AISI316



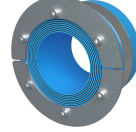
RS 100 ES AISI316



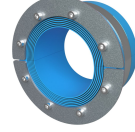
RS 125 ES AISI316



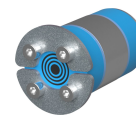
RS 100 PE AISI316 WOC



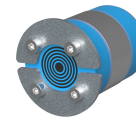
RS 125 PE AISI316 WOC



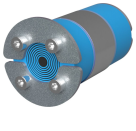
RS 150 PE AISI316 WOC



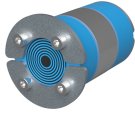
RS 25 PE AISI316



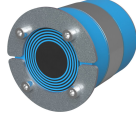
RS 31 PE AISI316



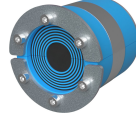
RS 43 PE AISI316



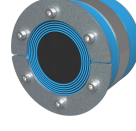
RS 50 PE AISI316



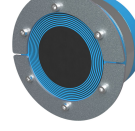
RS 68 PE AISI316



RS 75 PE AISI316



RS 100 PE AISI316



RS 125 PE AISI316

Título	Configuración	Dimensiones de abertura Ø	Peso	N.º de art.
RS 100 ES AISI316 WOC	1x (48.0-70.0)	100 - 102	0.8	ERS0001001121
RS 125 ES AISI316 WOC	1x (66.0-98.0)	125 - 127	1.2	ERS0001251121
RS 150 ES AISI316 WOC	1x (93.0-119.0)	150 - 152	1.6	ERS0001501121
RS 25 ES AISI316	1x (3.6-12.0)	25 - 26	0.04	ERS0100251121
RS 31 ES AISI316	1x (4.0-17.0)	31 - 32	0.11	ERS0100311121
RS 43 ES AISI316	1x (4.0-23.0)	43 - 45	0.24	ERS0100431121
RS 50 ES AISI316	1x (8.0-30.0)	50 - 52	0.32	ERS0100501121
RS 68 ES AISI316	1x (26.0-48.0)	68 - 70	0.5	ERS0100681121
RS 75 ES AISI316	1x (24.0-54.0)	75 - 77	0.6	ERS0100751121
RS 100 ES AISI316	1x (48.0-70.0)	100 - 102	1	ERS0101001121
RS 125 ES AISI316	1x (66.0-98.0)	125 - 127	1.6	ERS0101251121
RS 100 PE AISI316 WOC	1x (48.0-70.0)	100 - 102	0.8	PRS0001001121
RS 125 PE AISI316 WOC	1x (66.0-98.0)	125 - 127	1.2	PRS0001251121
RS 150 PE AISI316 WOC	1x (93.0-119.0)	150 - 152	1.6	PRS0001501121
RS 25 PE AISI316	1x (3.6-12.0)	25 - 26	0.04	PRS0100251121
RS 31 PE AISI316	1x (4.0-17.0)	31 - 32	0.06	PRS0100311121
RS 43 PE AISI316	1x (4.0-23.0)	43 - 45	0.24	PRS0100431121
RS 50 PE AISI316	1x (8.0-30.0)	50 - 52	0.32	PRS0100501121
RS 68 PE AISI316	1x (26.0-48.0)	68 - 70	0.5	PRS0100681121
RS 75 PE AISI316	1x (24.0-54.0)	75 - 77	0.6	PRS0100751121
RS 100 PE AISI316	1x (48.0-70.0)	100 - 102	1	PRS0101001121
RS 125 PE AISI316	1x (66.0-98.0)	125 - 127	1.6	PRS0101251121



The product information provided by Roxtec does not release the purchaser of the Roxtec system, or part thereof, from the obligation to independently determine the suitability of the products for the intended process, installation and/or use.

Roxtec gives no guarantee for the Roxtec system or any part thereof and assumes no liability for any loss or damage whatsoever, whether direct, indirect, consequential, loss of profit or otherwise, occurred or caused by the Roxtec systems or installations containing components not manufactured by an authorized manufacturer and/or occurred or caused by the use of the Roxtec system in a manner or for an application other than for which the Roxtec system was designed or intended.

Roxtec expressly excludes any implied warranties of merchantability and fitness for a particular purpose and all other express or implied representations and warranties provided by statute or common law. User determines suitability of the Roxtec system for intended use and assumes all risk and liability in connection therewith. In no event shall Roxtec be liable for indirect, consequential, punitive, special, exemplary or incidental damages or losses.

The Roxtec products are offered and sold in accordance with the conditions of the Roxtec General Terms of Sales. The latest version of the Roxtec General Terms of Sales can be downloaded from <https://www.roxtec.com/en/about-us/about-roxtec/general-terms-of-sales/>

We reserve the right to make changes to the product and technical information without further notice. Any errors in print or entry are no claims for indemnity. The content of this publication is the property of Roxtec International AB and is protected by copyright.

This document was generated on: 2024-04-17